

## Investment Highlights:

- 100% Owned Project in an area with past production of >4 million oz Au
- Politically stable jurisdiction
- Experienced management and exploration team with a history of success in BC.
- Excellent infrastructure close to roads, power and population centres
- Low market capitalization with plenty of upside
- Several high-quality drill-ready Cu/Au Targets

### 2017 Drilling At Swift Katie

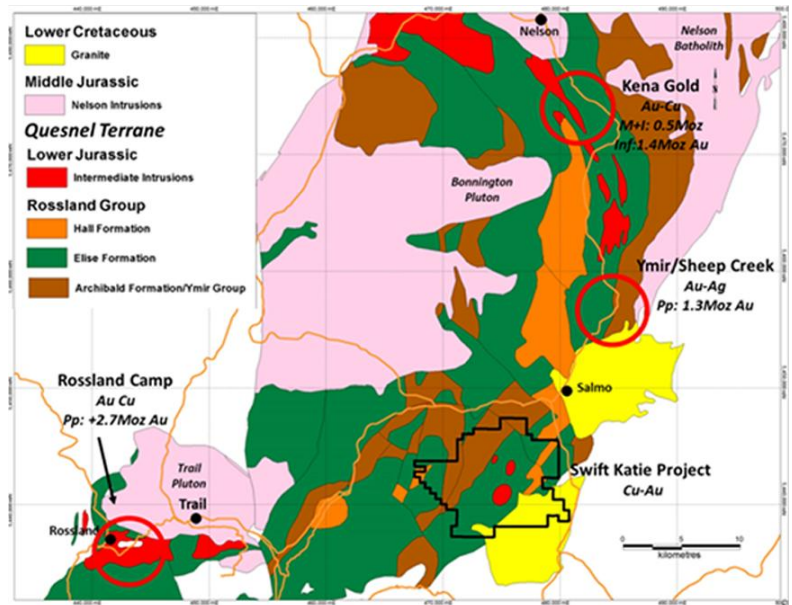


**Paradigm Gold Corporation is a Junior Mining Company Focused on the Acquisition and Exploration of Quality Mineral Projects in North America**

**Key Asset:** Swift Katie Project, Southeast BC, Canada

- Porphyry and Shear Hosted Copper/Gold Property in Historically Productive area of Southeast BC
- Large >8,400ha property in a prolific metallogenic district with historical production of **>4Moz Au**
- Both Copper-gold and high-grade gold vein targets on the property
- Shallow, high-grade Au drilled at the Swift target in 2017
- \$750,000 exploration program budget for follow-up field and drill testing in 2026

**'The Golden Arc' has produced +4Moz Au to date**



### Exploration Highlights:

- Swift Target – Several wide-spaced high grade gold intercepts including **3.5m of 13.3g/t Au**, 202g/t Ag and 0.34% Cu from SK14-002
- Katie Target – Cu/Au Porphyry mineralization drilled in three areas within a 2.75km x 1.75km area with highlight intercepts including **83.1m of 0.28% Cu and 0.33g/t Au** from hole NKT-91-13

