

July, 2025

## Investment Highlights:

- 100% Owned Project in an area with past production of >4 million oz Au
- Politically stable jurisdiction
- Experienced management and exploration team with a history of success in BC.
- Excellent infrastructure close to roads, power and population centres
- Low market capitalization with plenty of upside
- Several high-quality drill-ready Cu/Au Targets

### Drilling at Swift Katie

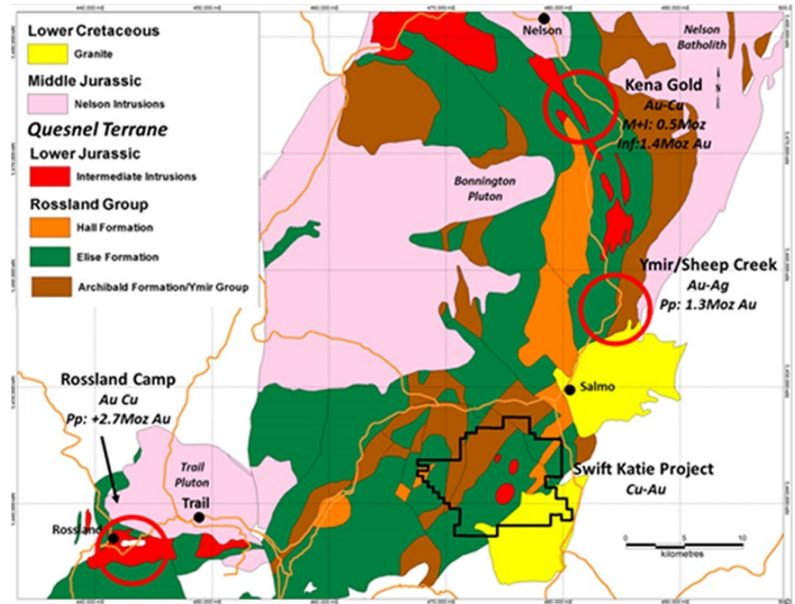


**Paradigm Gold Corporation is a Junior Mining Company Focused on the Acquisition and Exploration of Quality Mineral Projects in North America**

### Key Asset: Swift Katie Project, Southeast BC, Canada

- Porphyry and Shear Hosted Copper/Gold property in an historically productive area of Southeast BC
- Large >8,400ha property in a prolific metallogenic district with historical production of **>4Moz Au**
- Both copper-gold porphyry and high-grade gold vein targets on the property
- Shallow, high-grade Au drilled at the Swift target in 2017
- \$700,000 exploration program budget for follow-up field and drill testing in 2025

### 'The Golden Arc' has produced +4Moz Au to date



### Exploration Highlights:

- Swift Target – Several wide-spaced high grade gold intercepts including **3.5m of 13.3g/t Au**, 202g/t Ag and 0.34% Cu from SK14-002
- Katie Target – Cu/Au Porphyry mineralization drilled in three areas within a 2.75km x 1.75km area with highlight intercepts including **83.1m of 0.28% Cu and 0.33g/t Au** from hole NKT-91-13

# Company Details

## Management & Directors

John R. Kerr

President, Director

Lawrence Page, KC

Chairman, Director

Brian McGrath, BSc

Director

Joseph A. Kizis, Jr. BSc, MSc, PGeo

Director

Alf Stewart, B.Sc (Geology), MBA

Director

Killian Ruby, CPA, CA

Director

Arie Page

Corporate Secretary

Matt Anderson CPA, CA

CFO

## Share Structure

Shares Outstanding: 9.0 Million

Options Outstanding: 0.8 Million

Warrants Outstanding: 0.9 Million

Fully Diluted: 10.7 Million

## Head Office

1100 – 1199 West Hastings St,  
Vancouver, BC, Canada  
V6E 3T5

Email: [corpdev@mxltd.com](mailto:corpdev@mxltd.com)

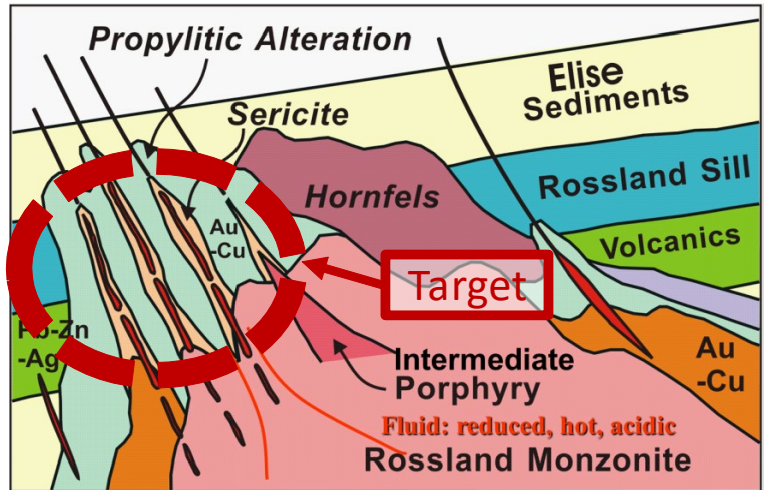
Tel: 604-641-2759

[www.paradigmgoldcorp.com](http://www.paradigmgoldcorp.com)



## Swift Katie Project – Primary Target Descriptions

**Gold Target: Au-Cu Deposits in the Rossland District may be a Direct Analogue to Gold Discoveries on the Swift Katie Project**

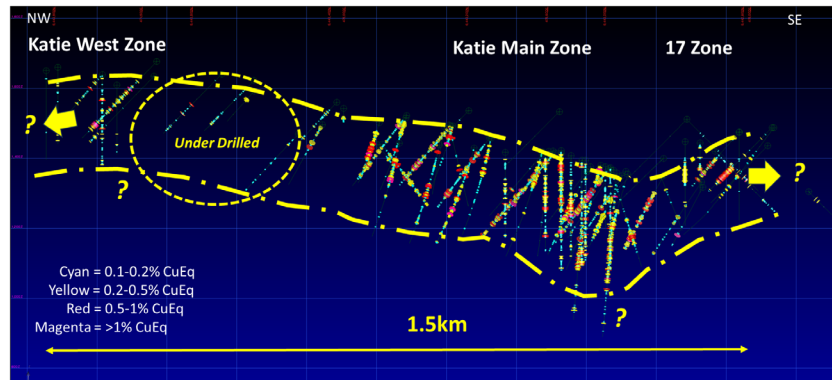


Rossland District Model (Hoy, 2005)

### Target: +2Moz High-Grade Au System<sup>(1)</sup>

- Host stratigraphy similar to Rossland Gold District
- Surface soil chemistry suggests high-level (epithermal) environment
- Widespread propylitic halo (chl-ep-py)
- Mineralization hosted in discrete quartz-sericite-pyrite structures

### Copper Target: Cu-Au Mineralization at Katie is Distributed over a +1500m Strike and Remains Open in Three Directions



CuEq Prices calculated using US\$2600/oz Au and US\$4.30/lb Cu assuming 100% Recoveries

(1) The exploration target is conceptual in nature, based on current and historic geological data and relies on projections of mineralization that are beyond the standard CIM classification of mineral resources and should not be relied on as a mineral resource estimate. There is no guarantee that further exploration will result in the target being delineated as a mineral resource.

*Disclaimer - This document contains forward-looking statements including but not limited to comments regarding the timing and content of upcoming work programs and geological interpretations that are subject to a number of known and unknown risks, uncertainties and other factors that may cause actual results to differ materially from those anticipated. Factors that could cause such differences include: uncertainties inherent to geological interpretations, changes in world commodity and equity markets, the cost and supply of materials and regulations affecting the mining industry, etc. Although we believe the expectations reflected in our forward looking statements are reasonable, results may vary and we cannot guarantee future results, levels of activity or the achievement of stated goals. Paradigm Gold Corporation does not assume any obligation to update or revise its forward-looking statements except to the extent required by applicable law Robert Macdonald M.Sc., P.Geo is the Qualified Person responsible for the supervision and preparation of the technical information in this disclosure.*